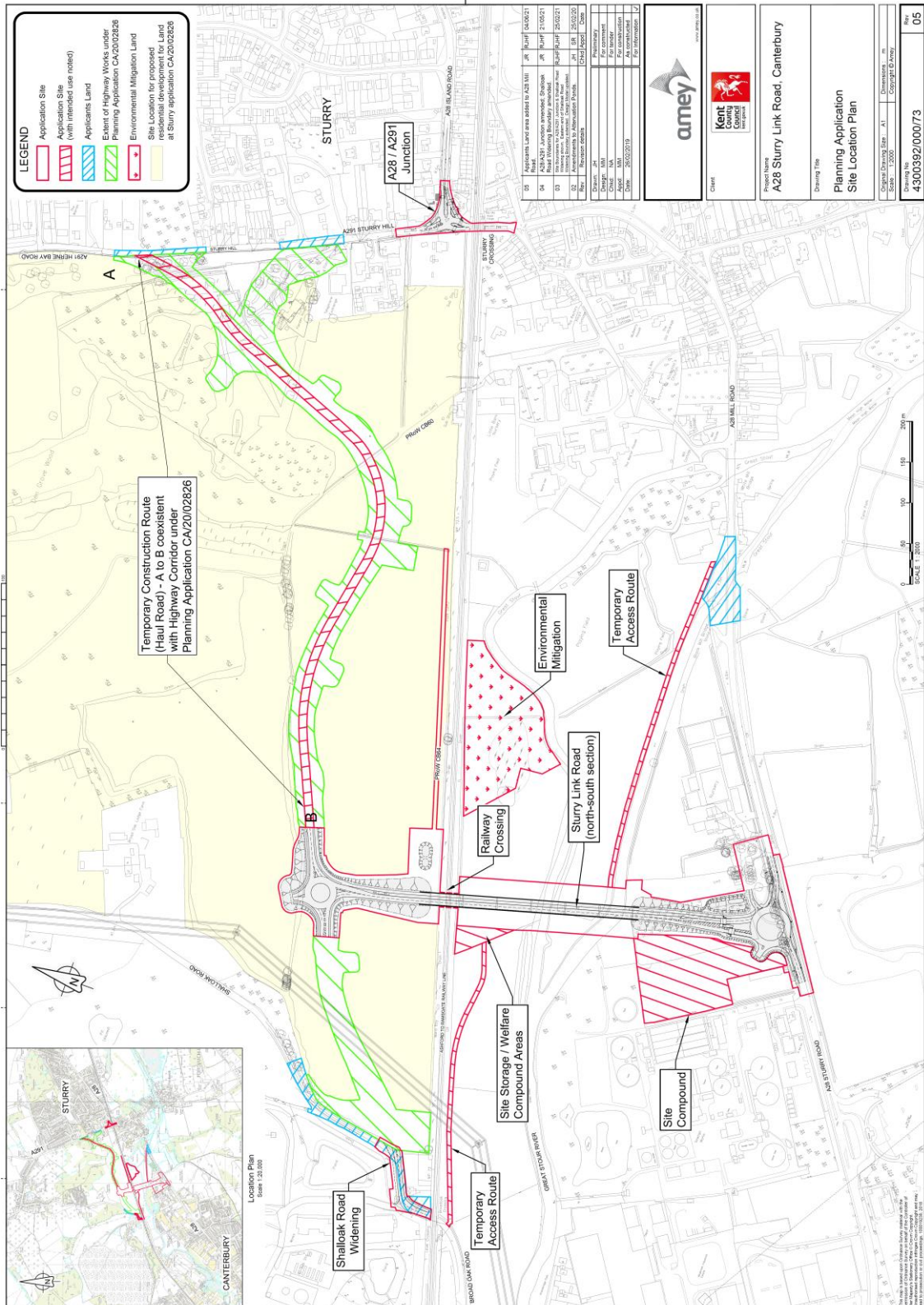


Construction of part of a new road (A28 Link Road) including viaduct between A28 Sturry Road and A291 Sturry Hill and associated on-line improvements at A28 Sturry Link Road, Sturry, Canterbury – CA/21/01854 (KCC/CA/0136/2021)

Appendix 1 – Application Plans

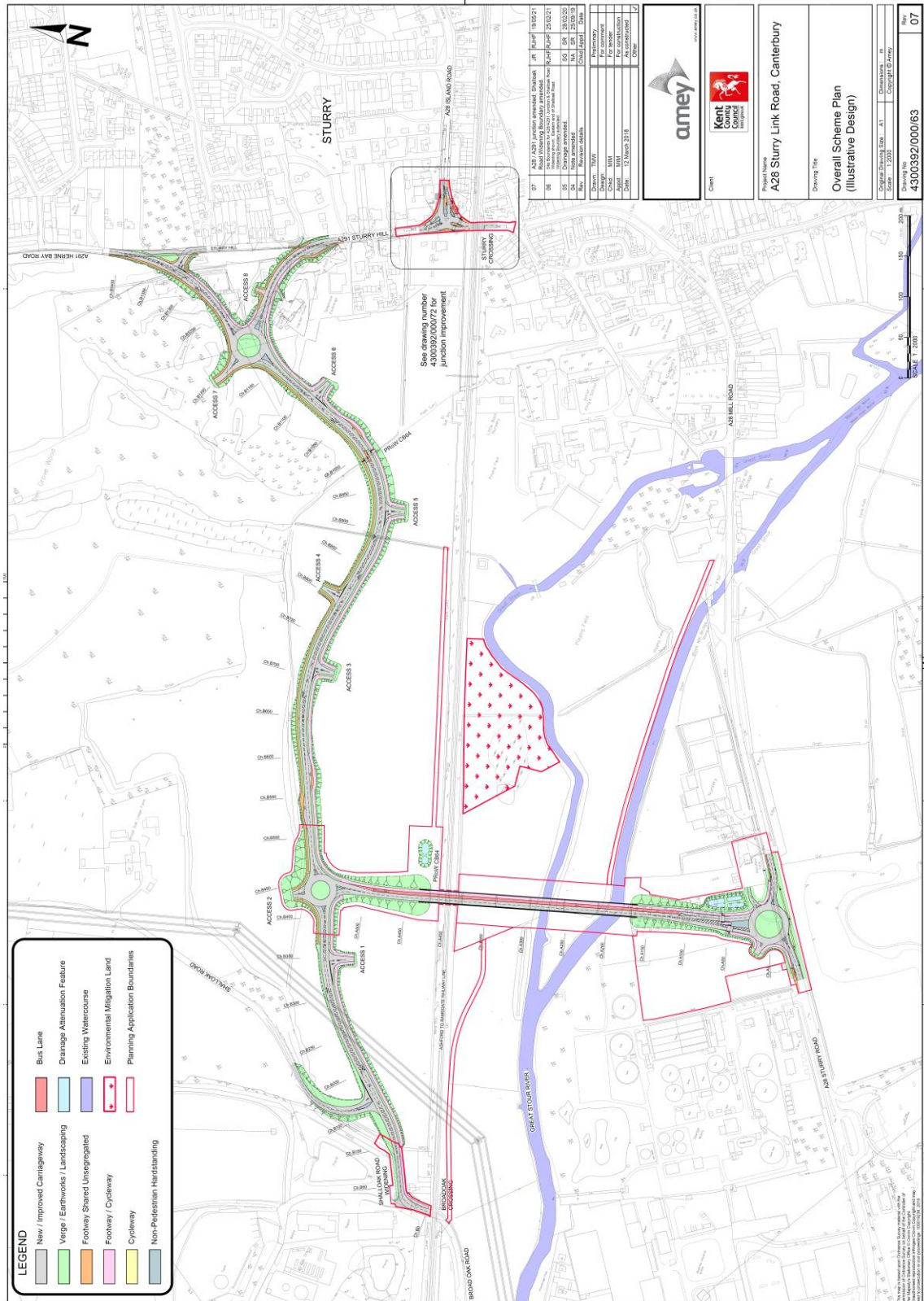
Construction of part of a new road (A28 Link Road) including viaduct between A28 Sturry Road and A291 Sturry Hill and associated on-line improvements at A28 Sturry Link Road, Sturry, Canterbury – CA/21/01854 (KCC/CA/0136/2021)

Site Location Plan



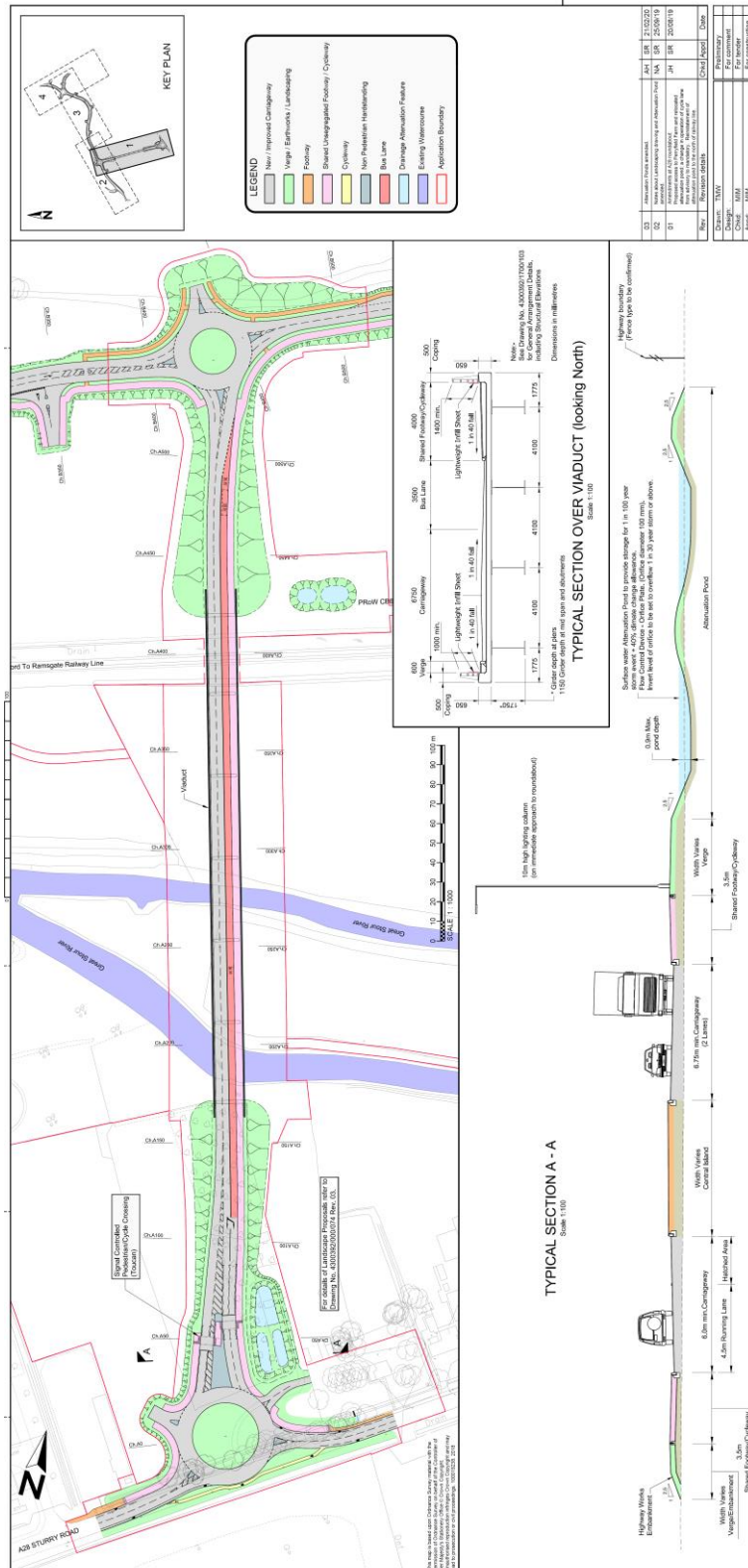
Construction of part of a new road (A28 Link Road) including viaduct between A28 Sturry Road and A291 Sturry Hill and associated on-line improvements at A28 Sturry Link Road, Sturry, Canterbury – CA/21/01854 (KCC/CA/0136/2021)

Scheme Plan



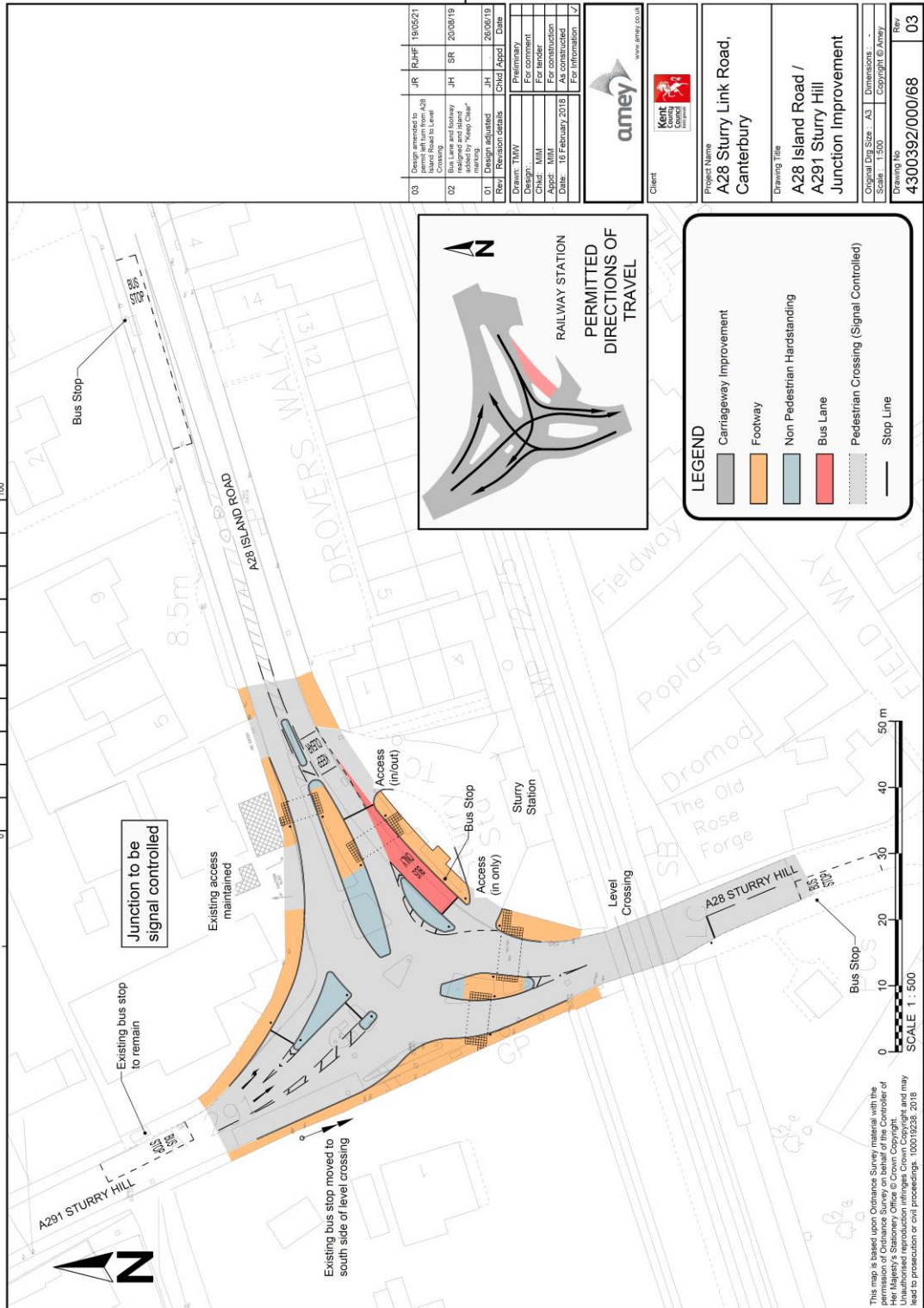
Construction of part of a new road (A28 Link Road) including viaduct between A28 Sturry Road and A291 Sturry Hill and associated on-line improvements at A28 Sturry Link Road, Sturry, Canterbury – CA/21/01854 (KCC/CA/0136/2021)

Road Layout from A28 across the river and railway line into 'Land at Sturry'



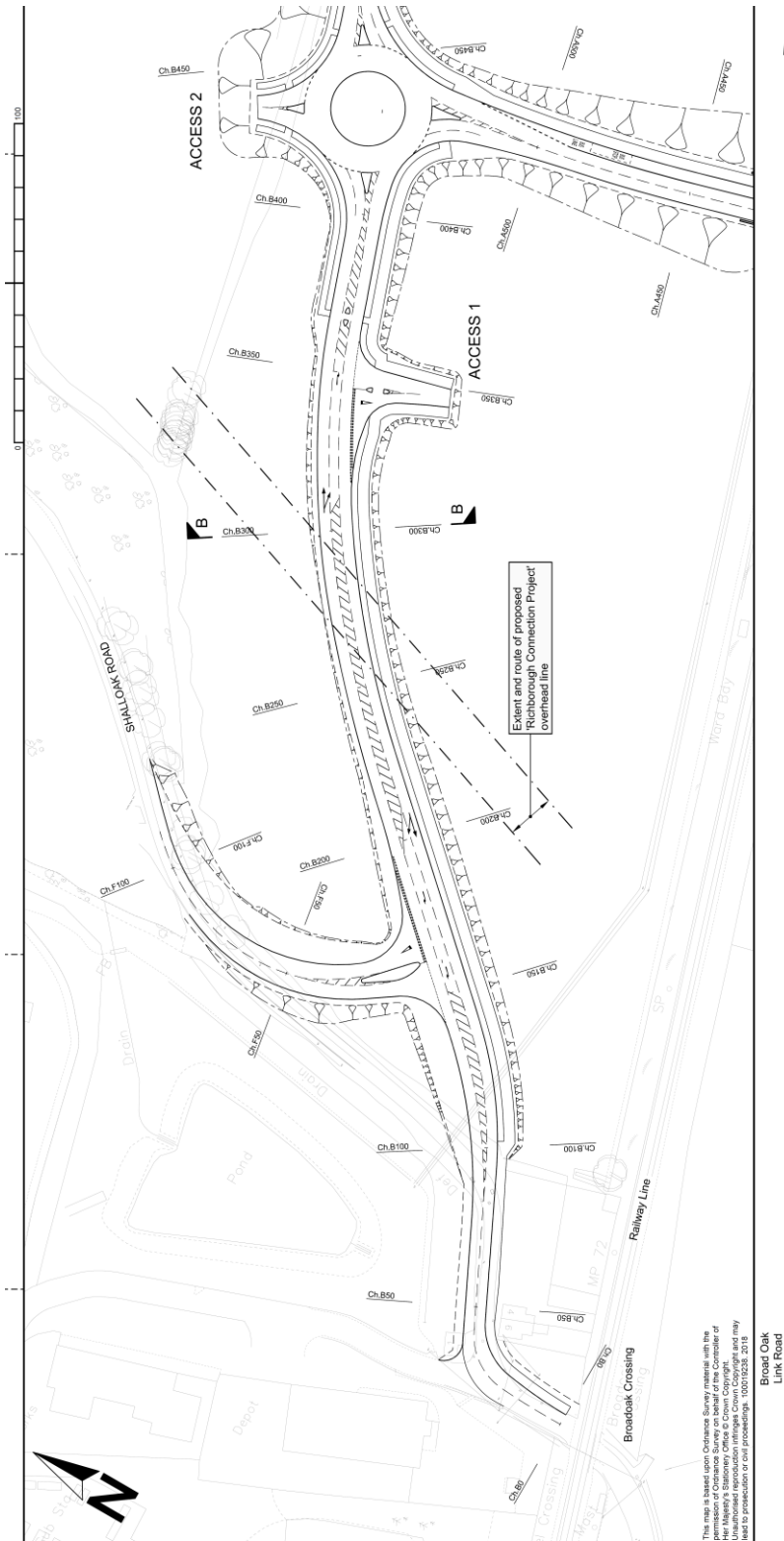
Construction of part of a new road (A28 Link Road) including viaduct between A28 Sturry Road and A291 Sturry Hill and associated on-line improvements at A28 Sturry Link Road, Sturry, Canterbury – CA/21/01854 (KCC/CA/0136/2021)

A28/A291 Junction Layout Alterations



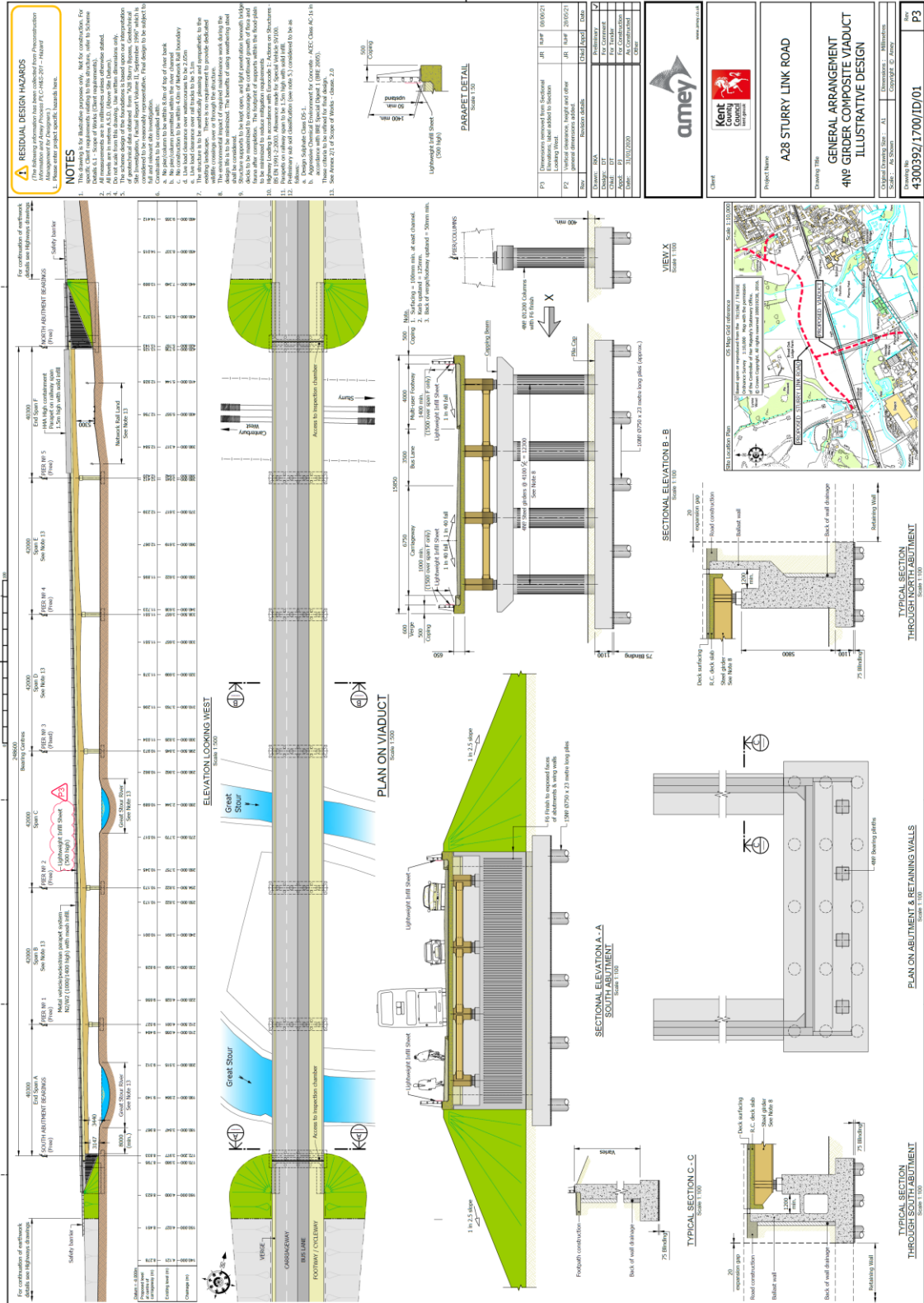
Construction of part of a new road (A28 Link Road) including viaduct between A28 Sturry Road and A291 Sturry Hill and associated on-line improvements at A28 Sturry Link Road, Sturry, Canterbury – CA/21/01854 (KCC/CA/0136/2021)

Shallook Road Widening



Construction of part of a new road (A28 Link Road) including viaduct between A28 Sturry Road and A291 Sturry Hill and associated on-line improvements at A28 Sturry Link Road, Sturry, Canterbury – CA/21/01854 (KCC/CA/0136/2021)

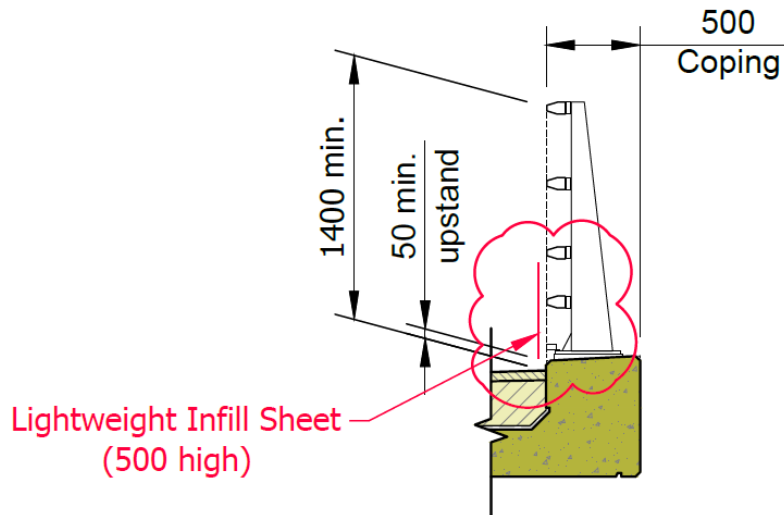
Viaduct General Arrangement



Item D1

Construction of part of a new road (A28 Link Road) including viaduct between A28 Sturry Road and A291 Sturry Hill and associated on-line improvements at A28 Sturry Link Road, Sturry, Canterbury – CA/21/01854 (KCC/CA/0136/2021)

Parapet Detail

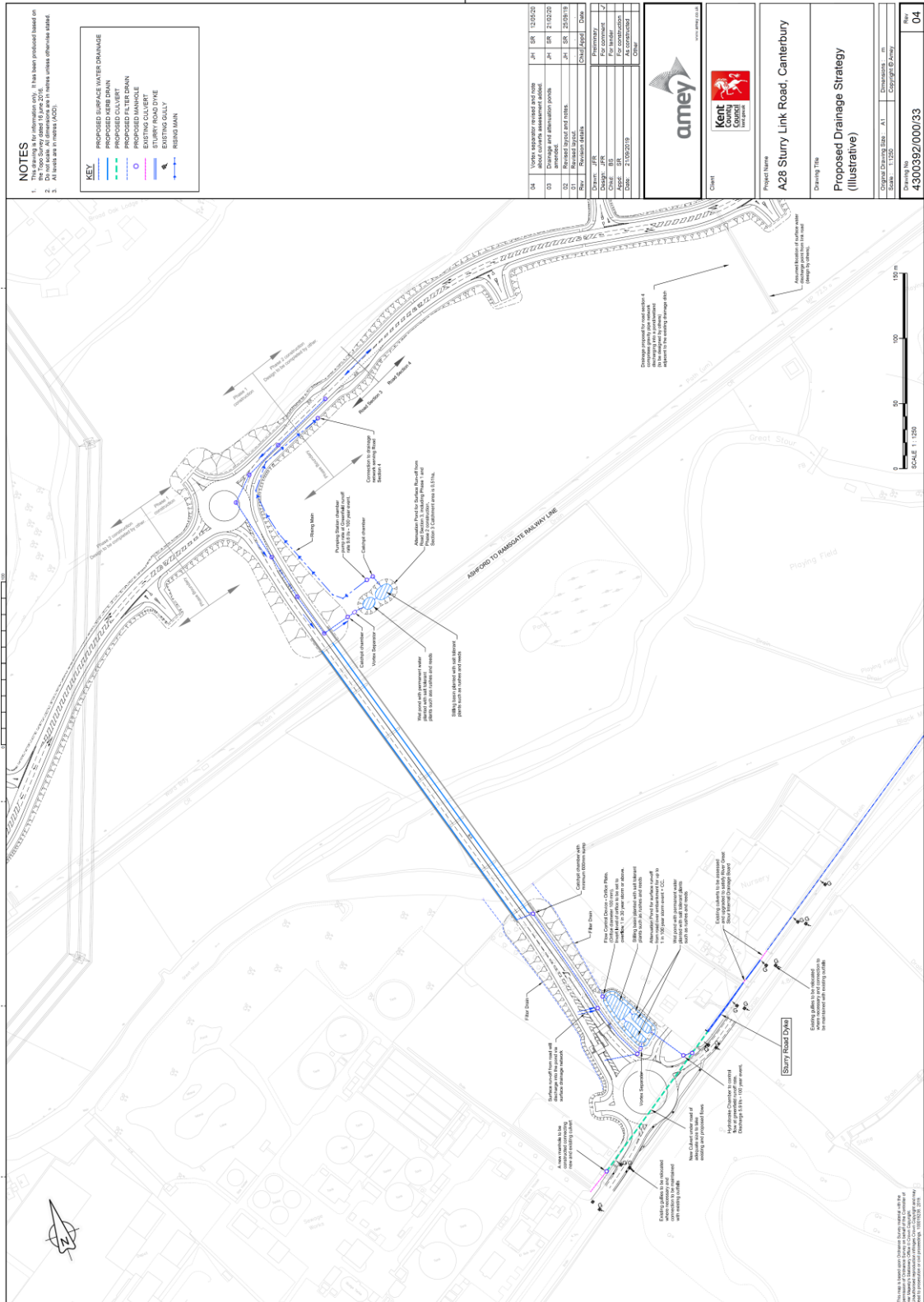


PARAPET DETAIL

Scale 1:50

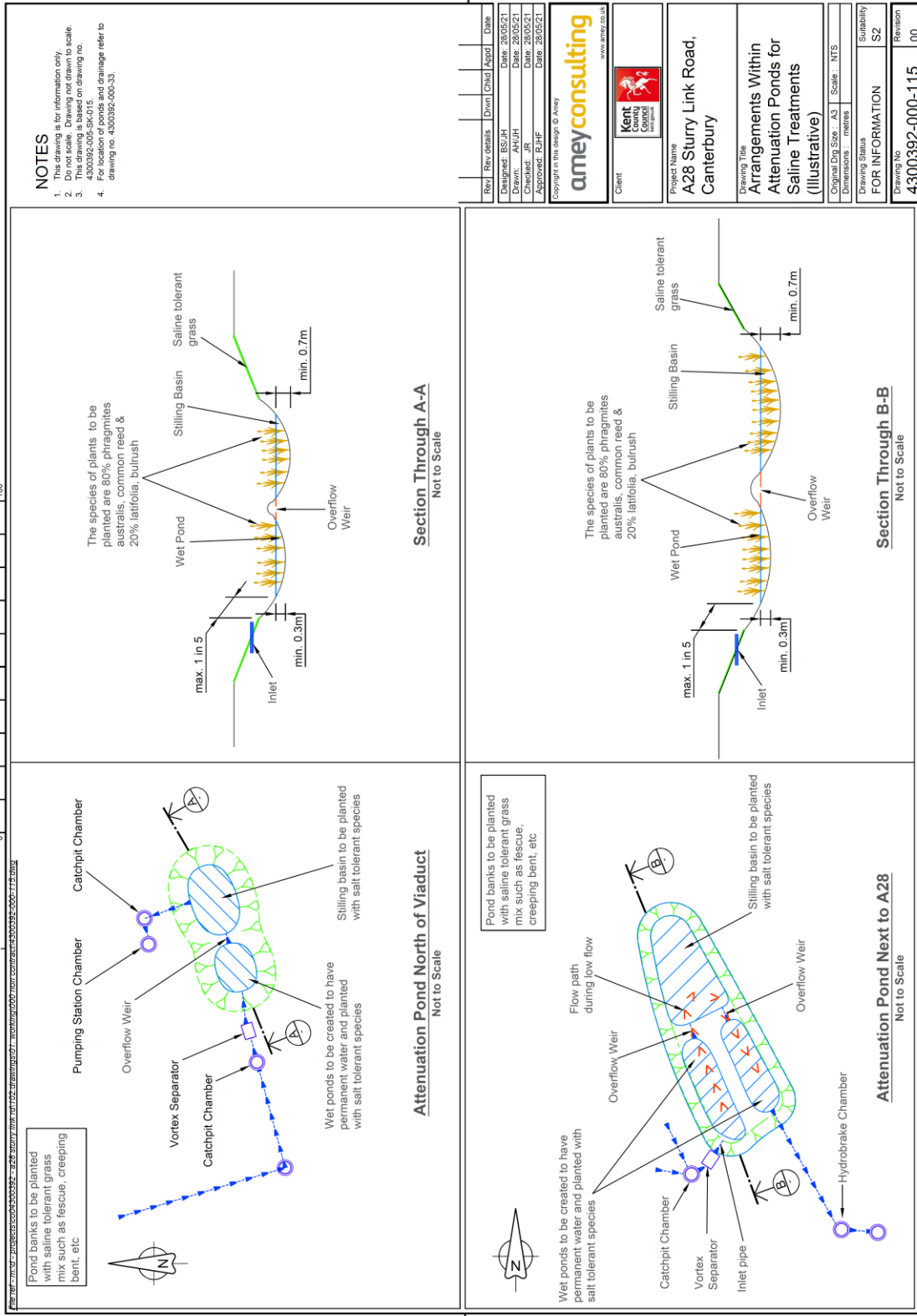
Construction of part of a new road (A28 Link Road) including viaduct between A28 Sturry Road and A291 Sturry Hill and associated on-line improvements at A28 Sturry Link Road, Sturry, Canterbury – CA/21/01854 (KCC/CA/0136/2021)

Drainage Strategy



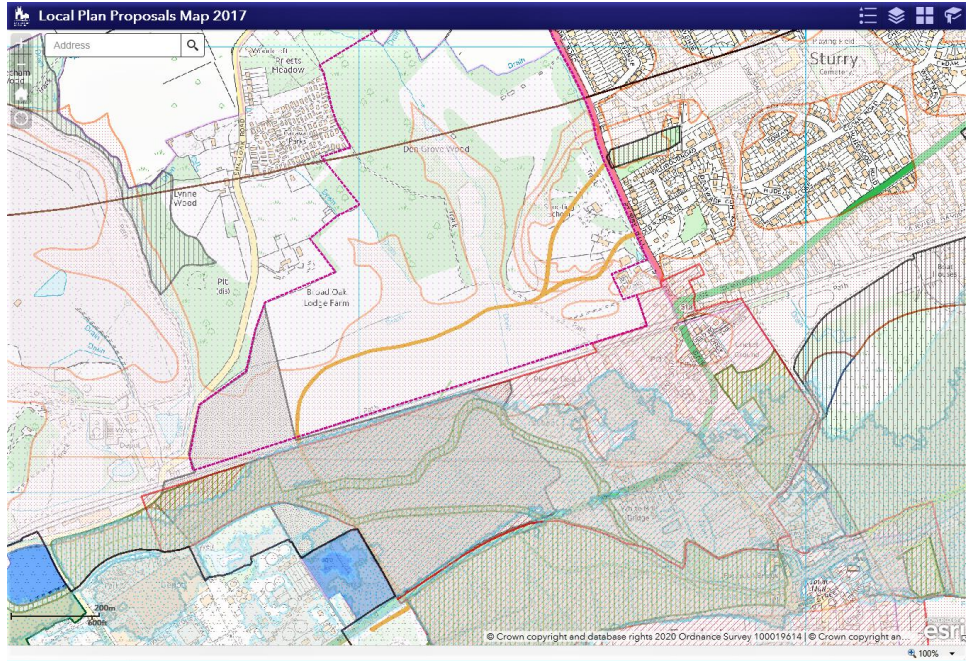
Construction of part of a new road (A28 Link Road) including viaduct between A28 Sturry Road and A291 Sturry Hill and associated on-line improvements at A28 Sturry Link Road, Sturry, Canterbury – CA/21/01854 (KCC/CA/0136/2021)

Arrangements within Attenuation Ponds for Saline Treatment



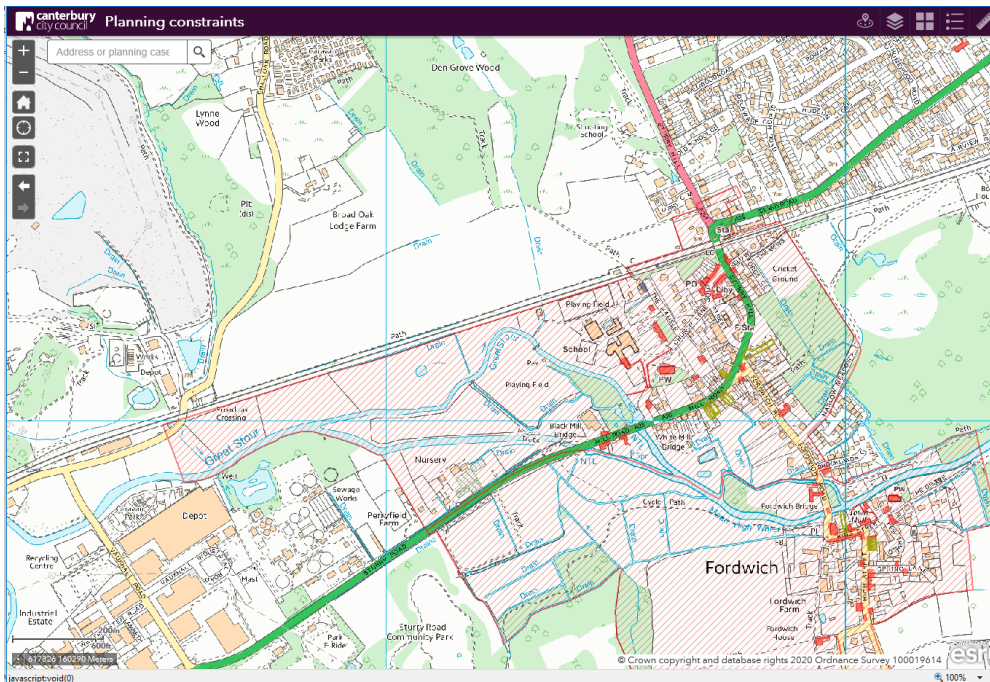
Construction of part of a new road (A28 Link Road) including viaduct between A28 Sturry Road and A291 Sturry Hill and associated on-line improvements at A28 Sturry Link Road, Sturry, Canterbury – CA/21/01854 (KCC/CA/0136/2021)

Canterbury City Council Local Plan Extract



Road Safeguarding Area T14 ■
Sturry Relief Road

Strategic Allocation SP3 □
Land at Sturry/Broad Oak

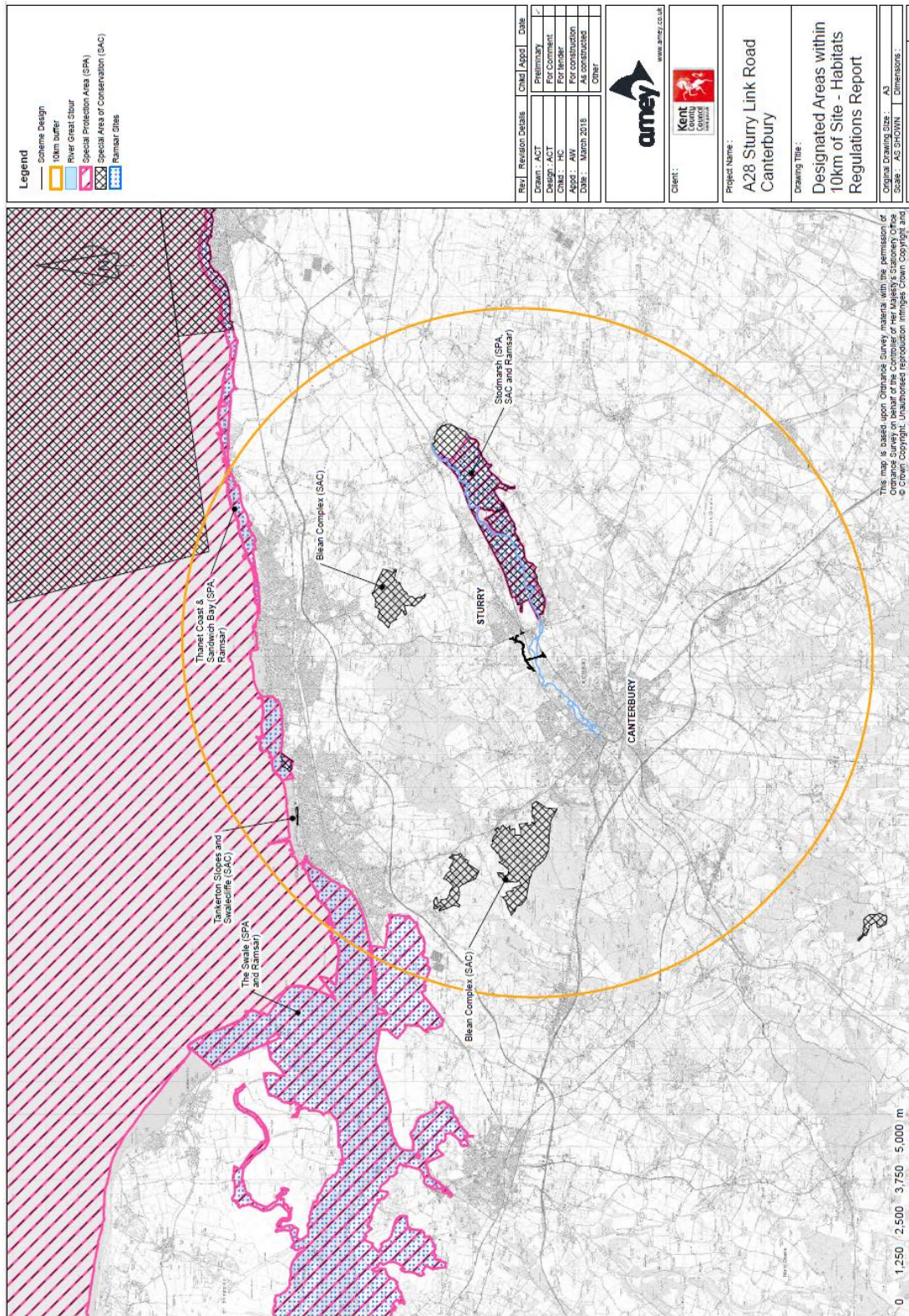


Conservation Area ▨

Listed buildings ●

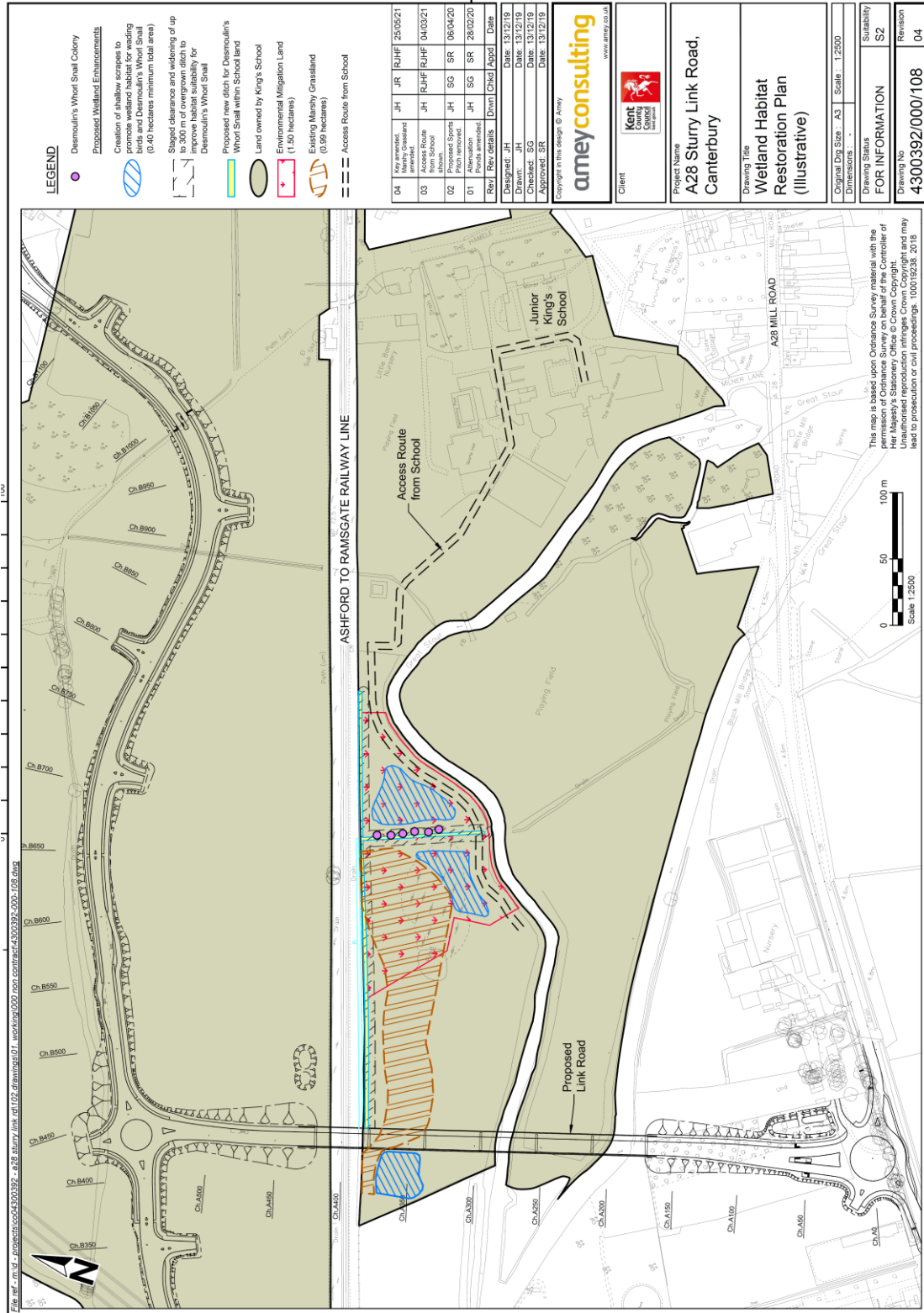
Construction of part of a new road (A28 Link Road) including viaduct between A28 Sturry Road and A291 Sturry Hill and associated on-line improvements at A28 Sturry Link Road, Sturry, Canterbury – CA/21/01854 (KCC/CA/0136/2021)

Designated Sites within 10km of the Proposed Sturry Link Road



Construction of part of a new road (A28 Link Road) including viaduct between A28 Sturry Road and A291 Sturry Hill and associated on-line improvements at A28 Sturry Link Road, Sturry, Canterbury – CA/21/01854 (KCC/CA/0136/2021)

Wetland Habitat Restoration Plan



Construction of part of a new road (A28 Link Road) including viaduct between A28 Sturry Road and A291 Sturry Hill and associated on-line improvements at A28 Sturry Link Road, Sturry, Canterbury – CA/21/01854 (KCC/CA/0136/2021)

Canterbury Air Quality Management Area

Air Quality Management Area – Canterbury No.

